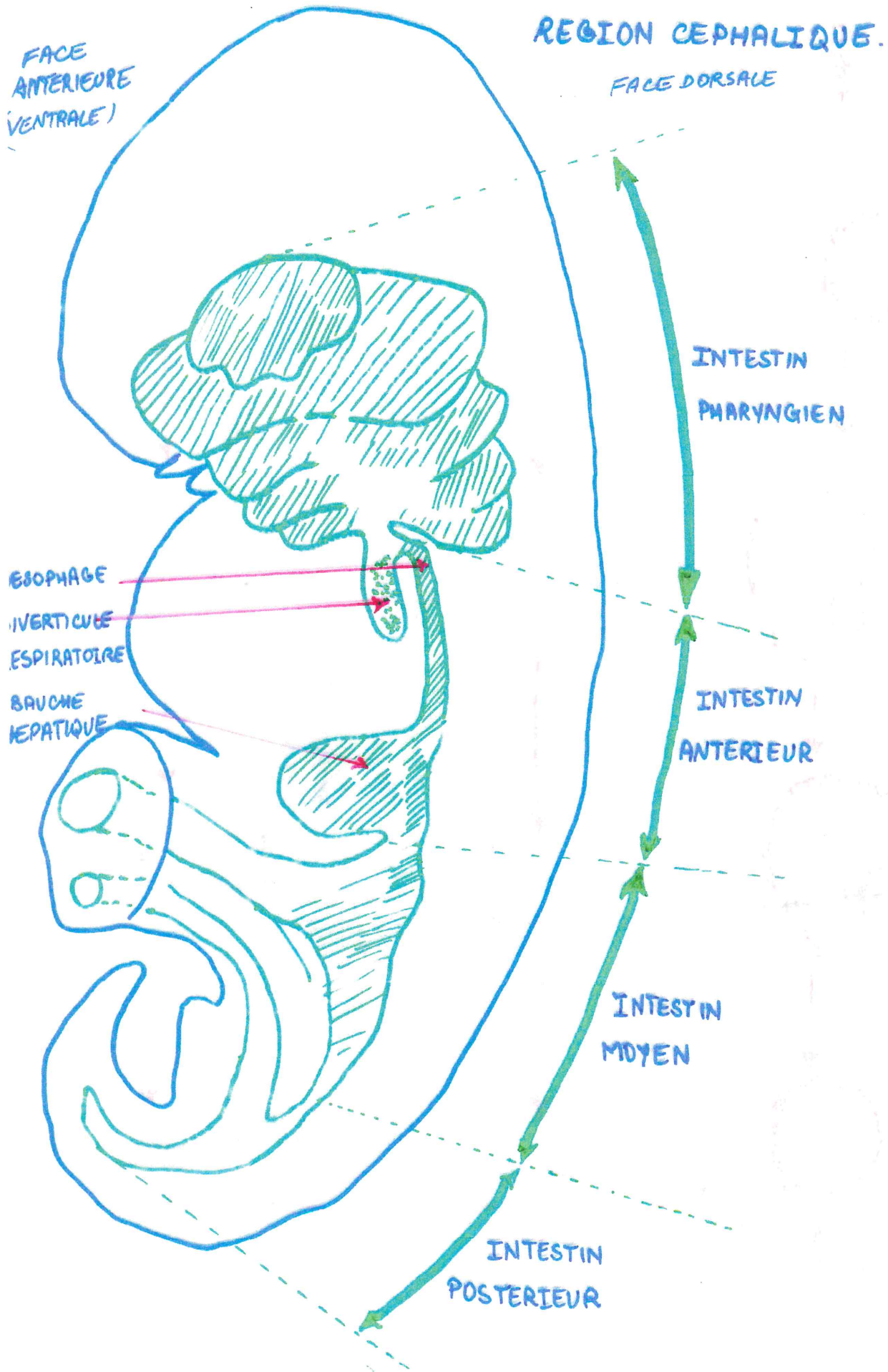
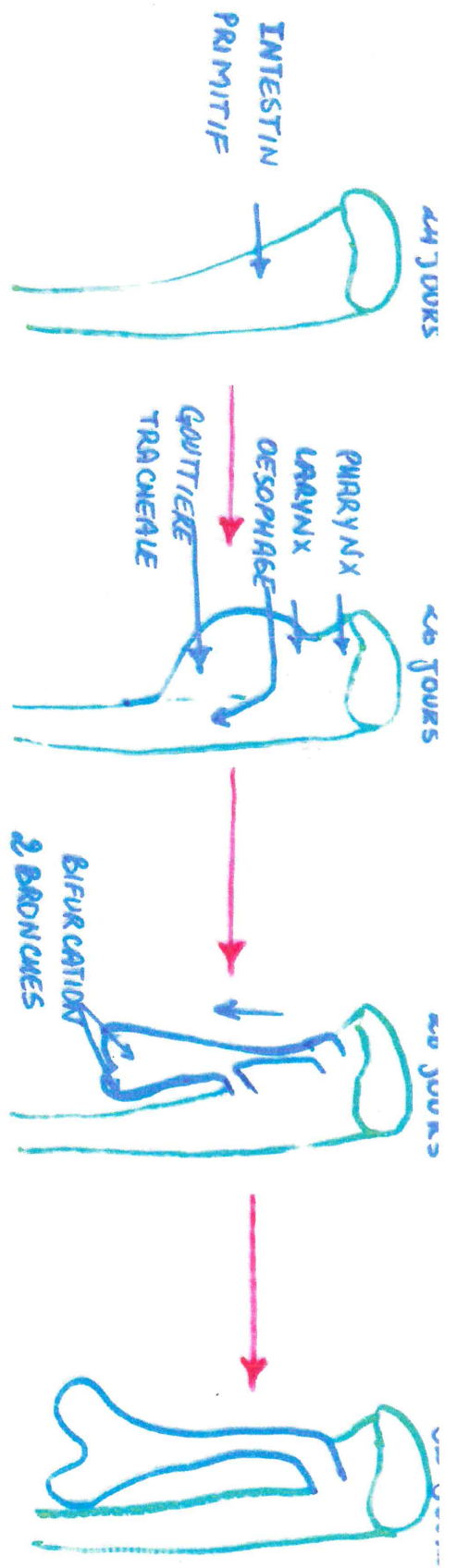


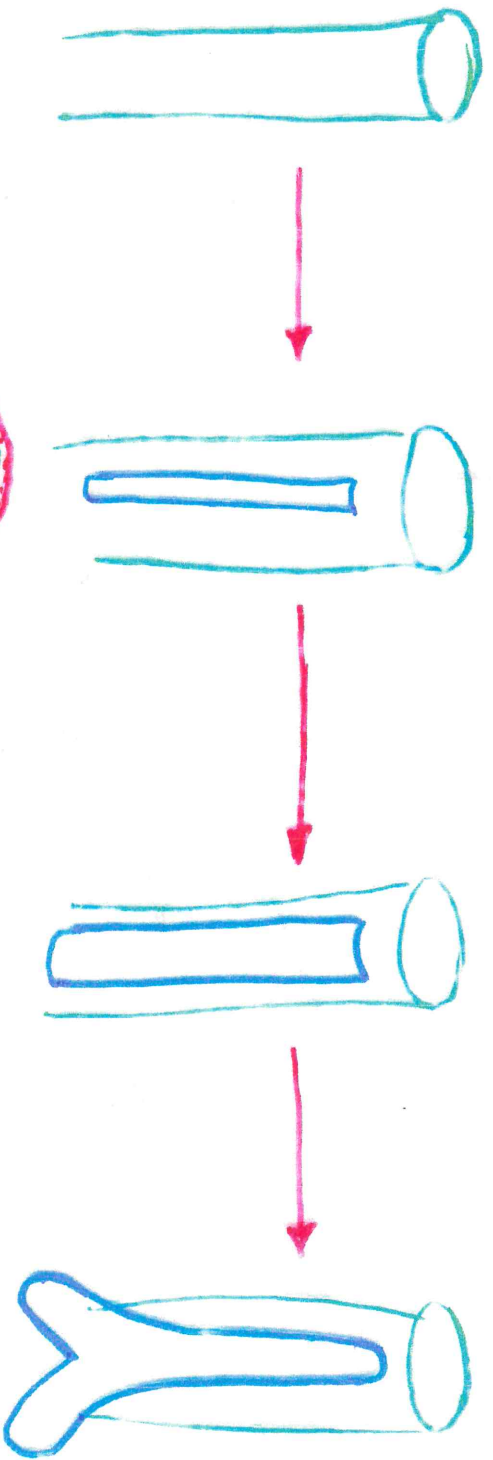
FORMATION DU DIVERTICULE RESPIRATOIRE FIN DE LA 3^e SEMAINE DE DEVELOPPEMENT EMBRYONNAIRE



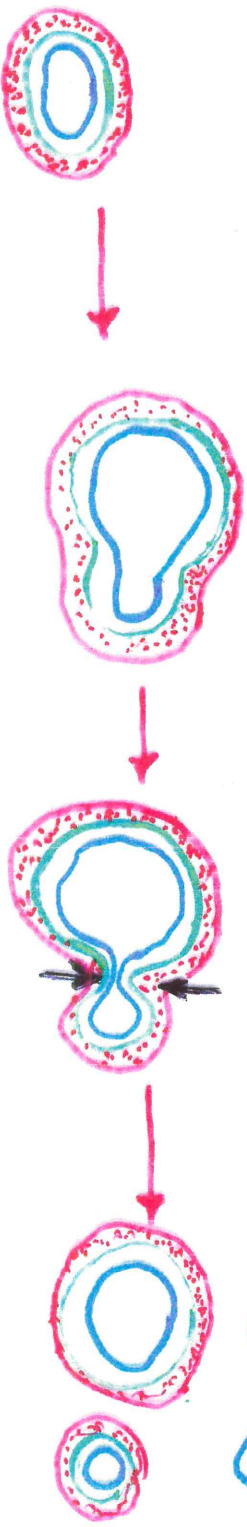
VUE DE PROFIL



VUE DE FACE



Coupe transversale



INTESTIN PRIMITIF

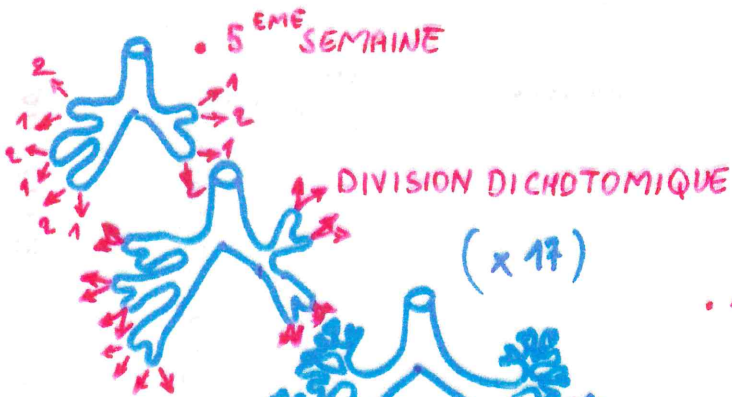
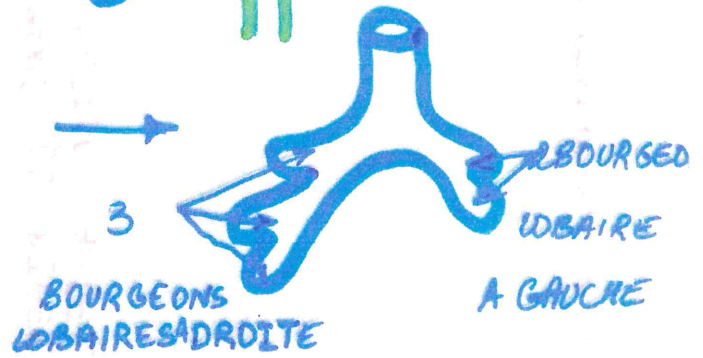
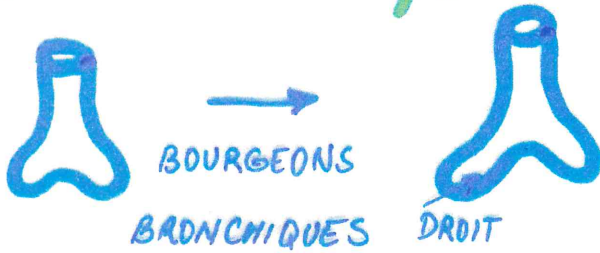
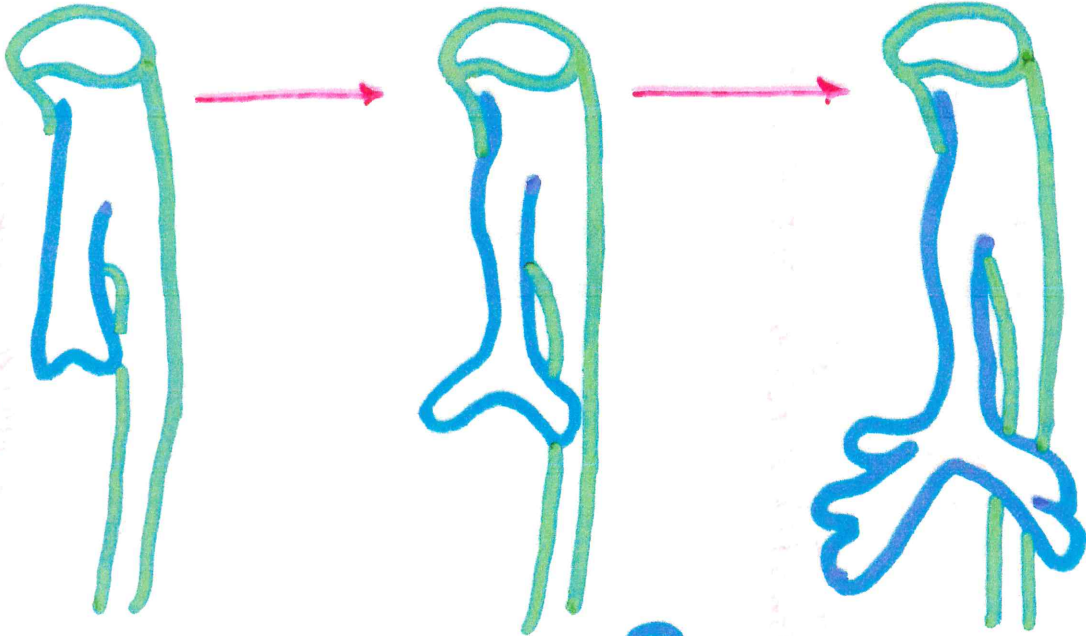
DIVERTICULE RESPIRATOIRE

INDIVIDUALISATION

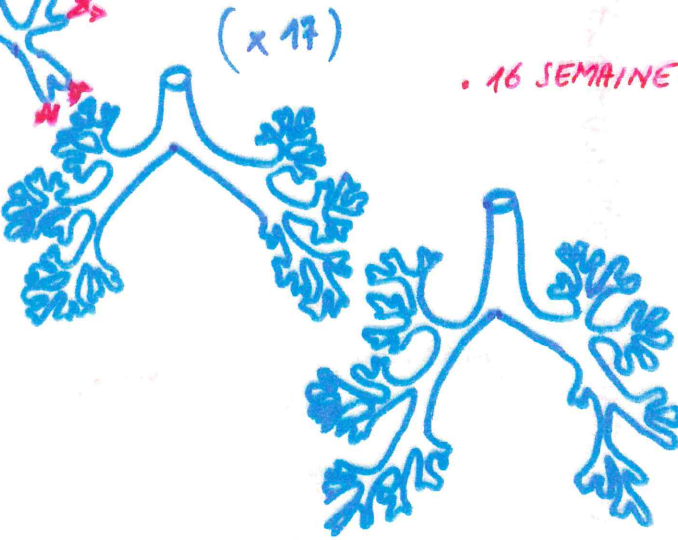
ESOPHAGE ET TRACHÉE

• 28 JOURS

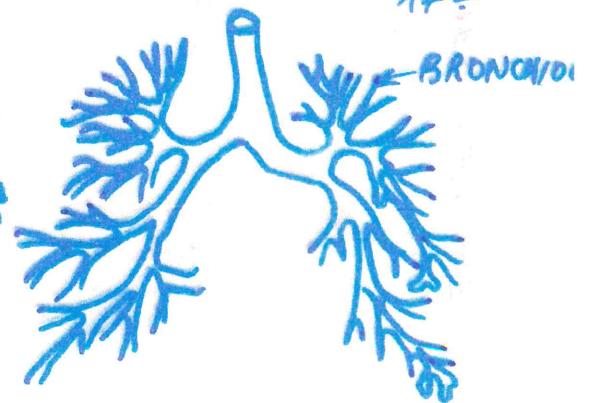
• 35 JOURS



• 16 SEMAINE.

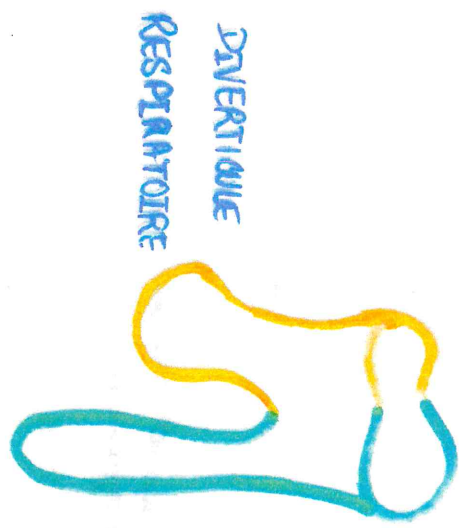


• 24 SEMAINE
17 ÷



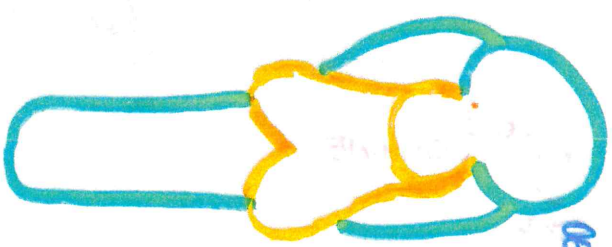
DIVISIONS DICHOTOMIQUE DU BOURGEON RESPIRATOIRE.

FIN DE LA 3^{EME} SEMAINE

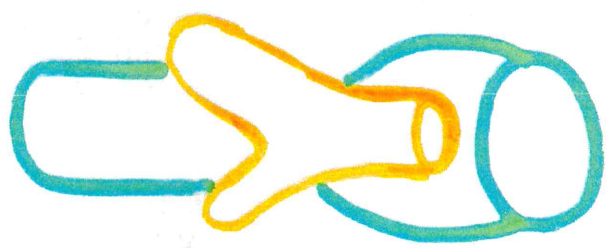


INTESTIN ANTERIEUR

AU COURS DE LA 4^{EME} SEMAINE



SEPTUM OESOPHAGO-TRACHEALE



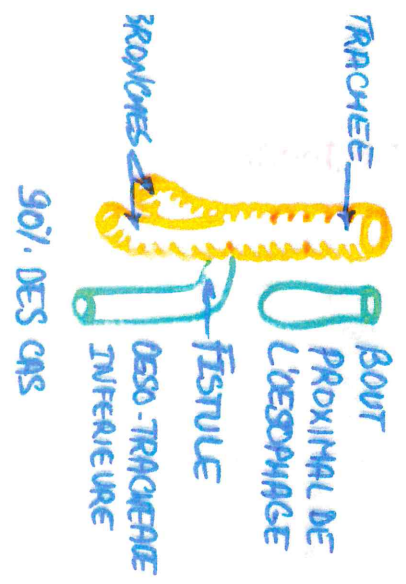
PHARYNX

TRACHEE

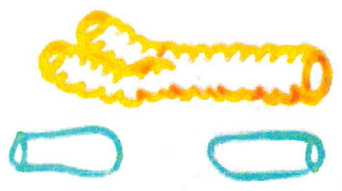
BOURGEOIS BRONCHIAUX

OESOPHAGE

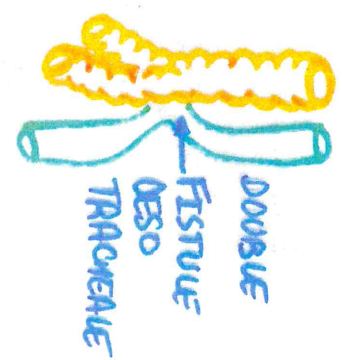
STADES SUCCESSIFS DU DEVELOPPEMENT DU DIVERTICULE RESPIRATOIRE AU COURS DU CLOTISSEMENT DE L'INTESTIN ANTERIEUR.



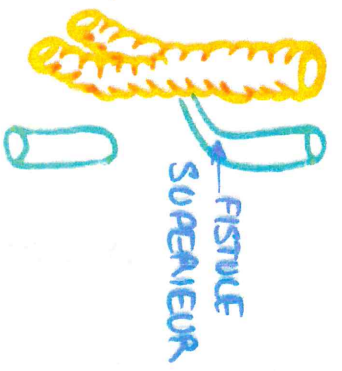
90% DES CAS



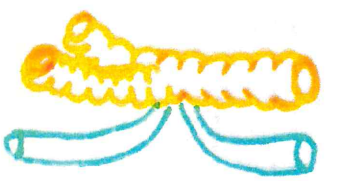
4%



4%



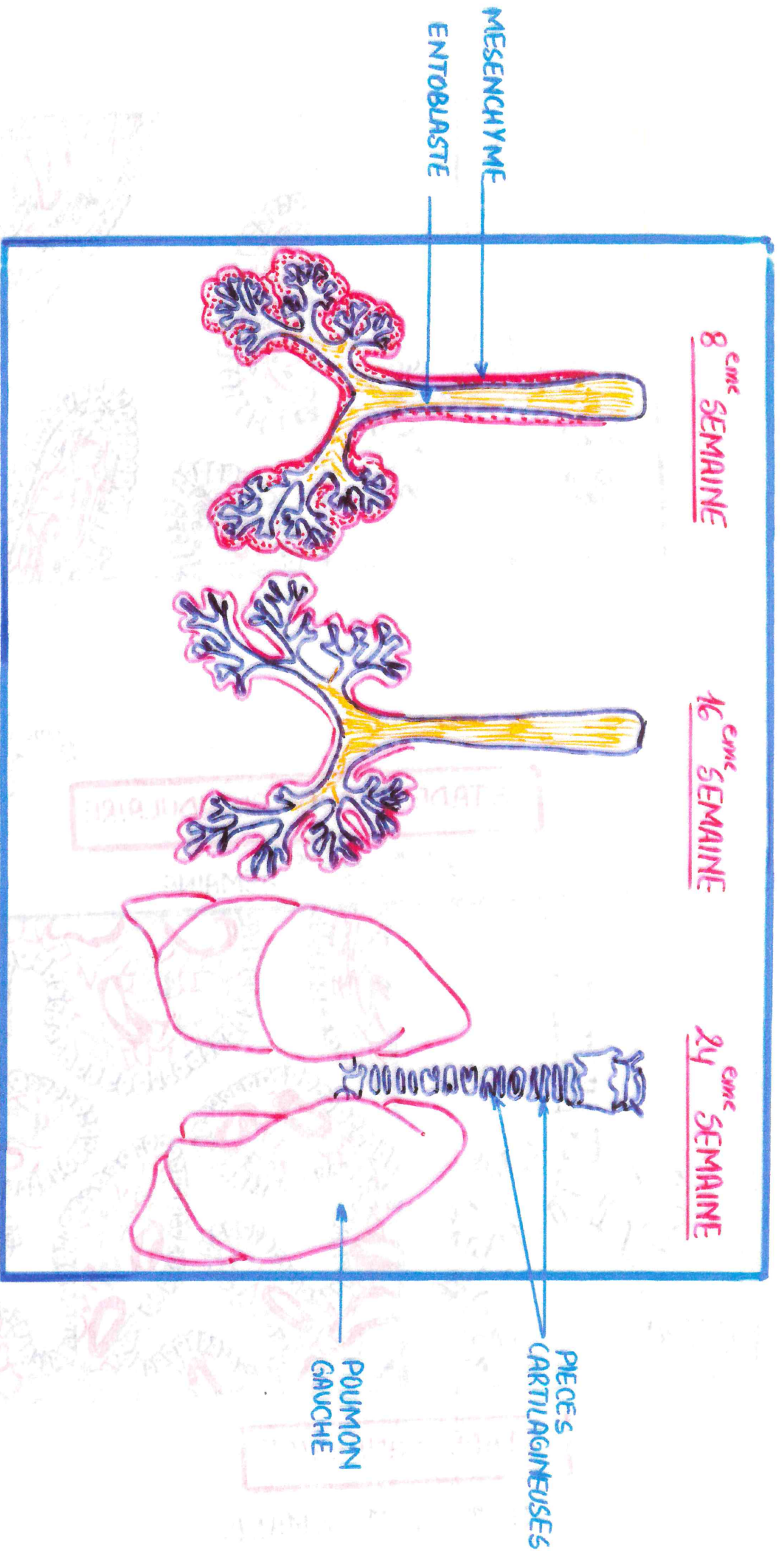
1%

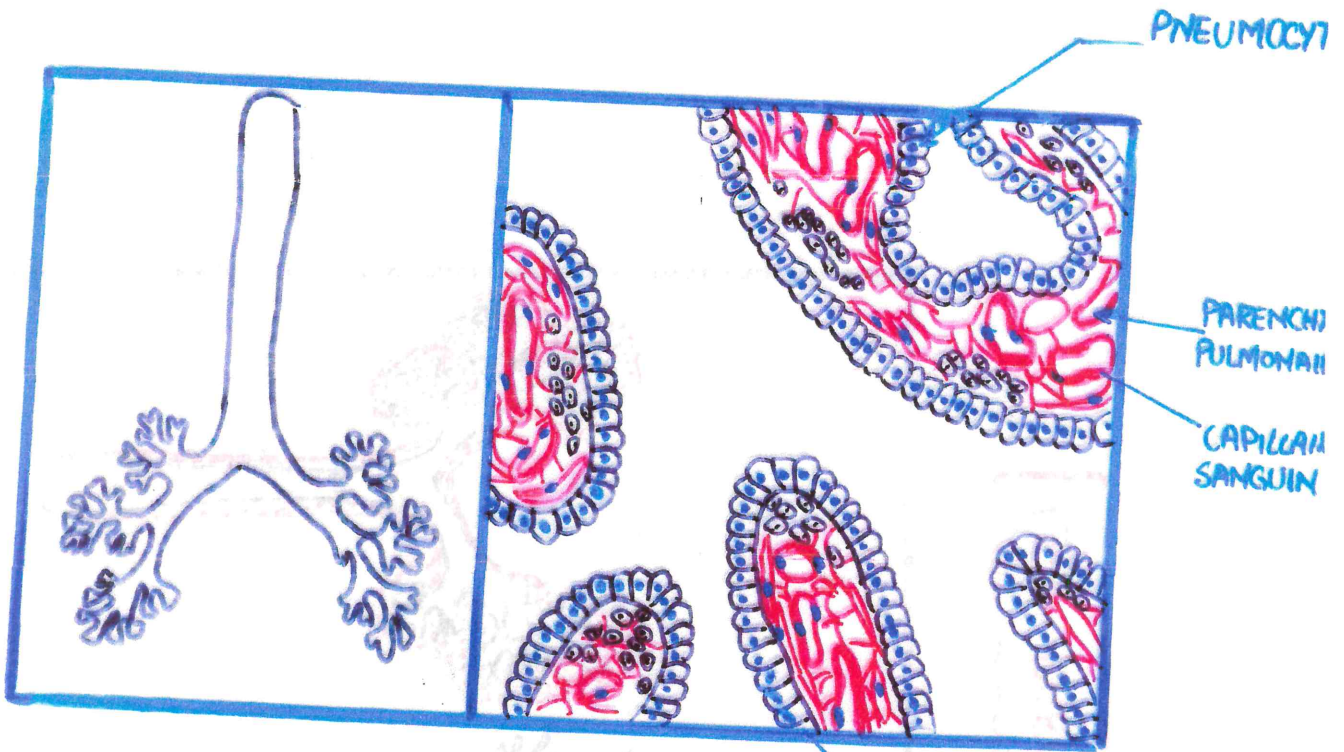


1%

ATRESIE DE L'OESOPHAGE AVEC OU SANS FISTULE OESO-TRACHEALE.

LES PAROIS DES VOIES AERIENNES

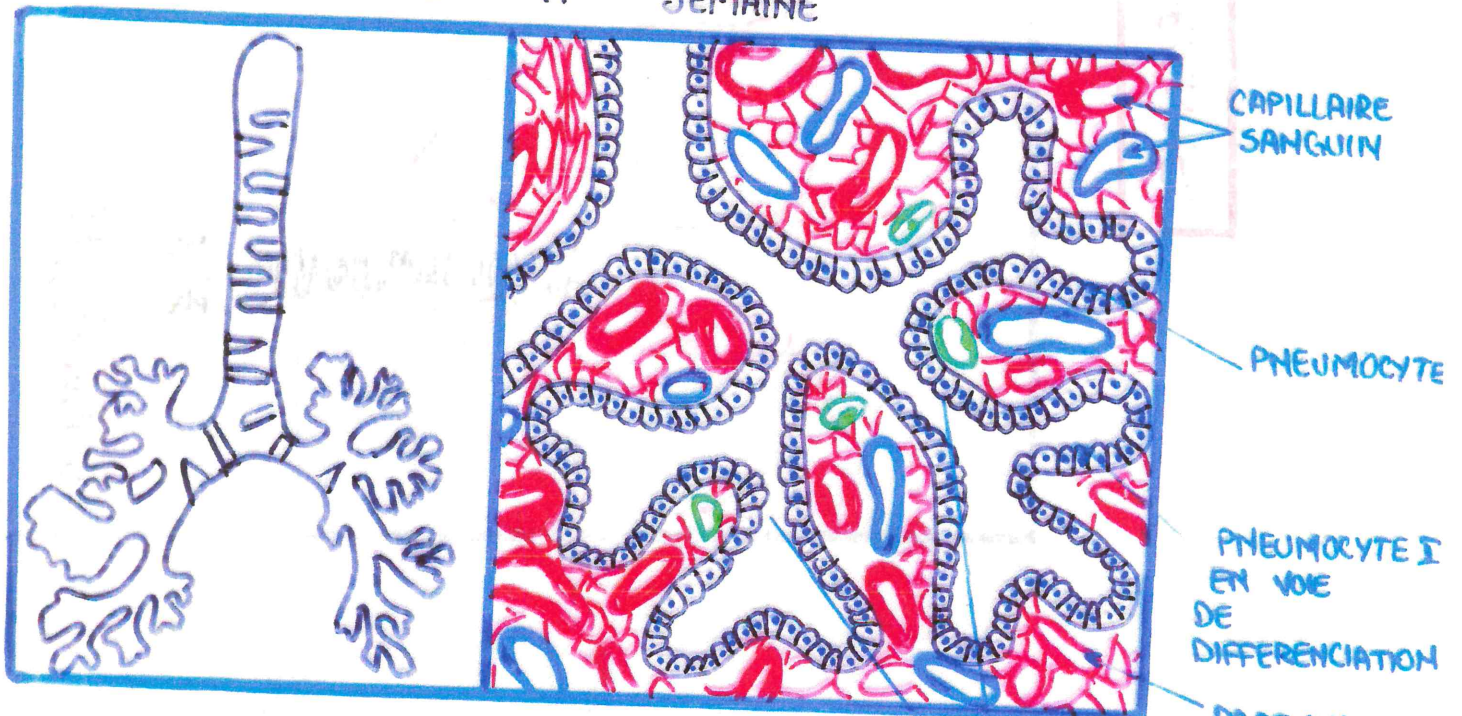




STADE PSEUDO-GLANDULAIRE

5^{eme} - 17^{eme} SEMAINE

- 13^{eme}
- CELLULES CILIES
 - CELLULES SECRETRICES, ENDOCRINES
 - CELLULE CALICIFORME



STADE CANALAIRE

17^{eme} - 25^{eme} SEMAINE

PNEUMOCYTE :

PNEUMOCYTE I

CAPILLAIRE SANGUIN

SAC TERMINAL (FORME D'ALVEOLE JUXTAPOSEE)

PARENCHYMI PULMONAIRE

25^{ème} - 26^{ème} SEMAINE → NAISSANCE

STADE SACULAIRE

SAC ALVEOLAIRE DEFINITIF

PNEUMOCYTE II

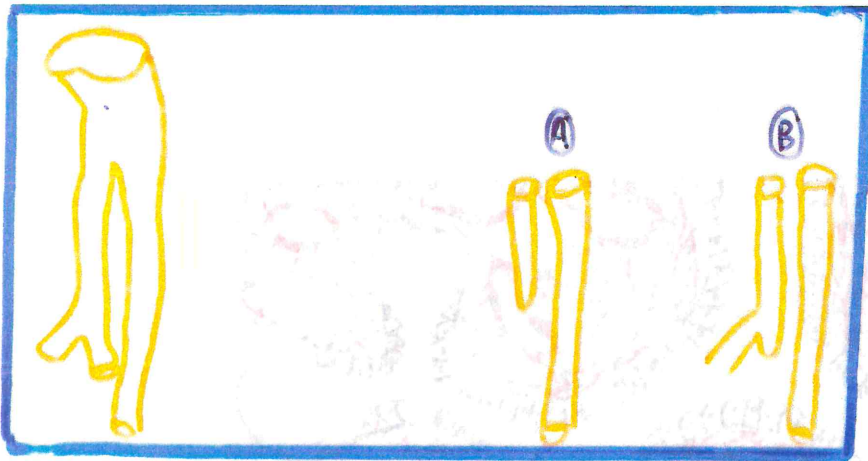
ESPACE INTER-ALVEOLAIRE

PARENCHYME PULMONAIRE

VAISSEAU SANGUIN

STADE ALVEOLAIRE

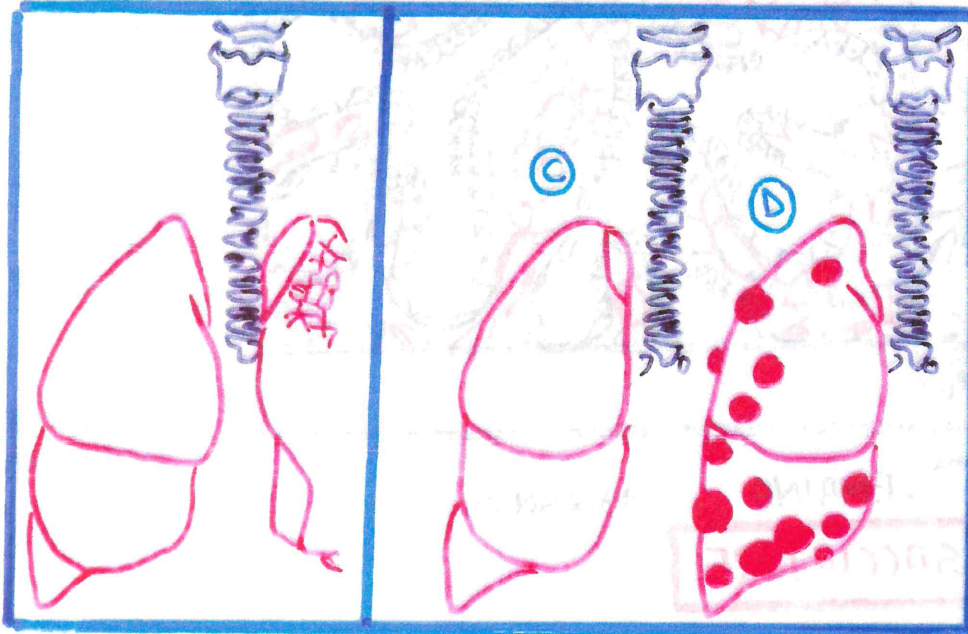
36^{ème} SEMAINE - 18 MOIS POST-NATAL



A) AGENESIE TOTALE

RARE, ARRET DU PROCESSUS DE DIVISION DICHOTOMIQUE ASSOCIE A UN : OLIGO-HYDRAMNIOS

B) AGENESIE UNILATERALE



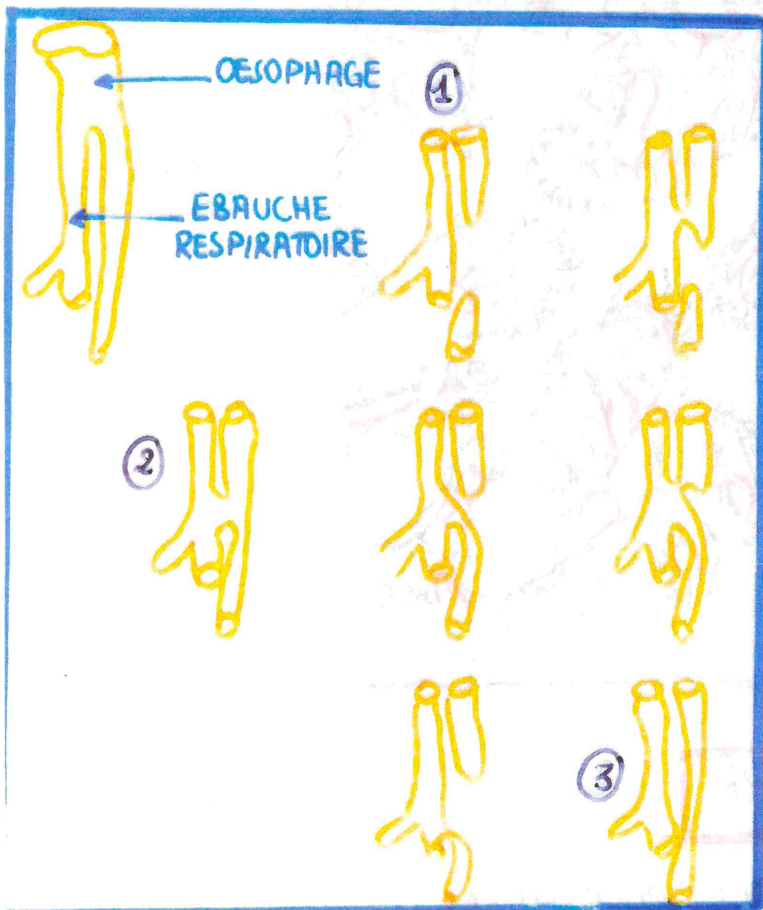
C) ANOMALIE DE SEGMENTATION

LE PLUS SOUVENT SANS ANOMALIES FONCTIONNELLES

D) DILATATION KYSTIQUE DES EXTREMITES BRONCHIQUE

EN RAPPORT AVEC UNE ANOMALIE GENETIQUE LORS DE LA FORMATION DES BRONCHIOLES RESPIRATOIRES

ET DU DEPLISSEMENT ALVEOLAIRE



E) MALFORMATION II^{ème}

ANOMALIES DE L'INDIVIDUALISATION RESPIRATOIRE

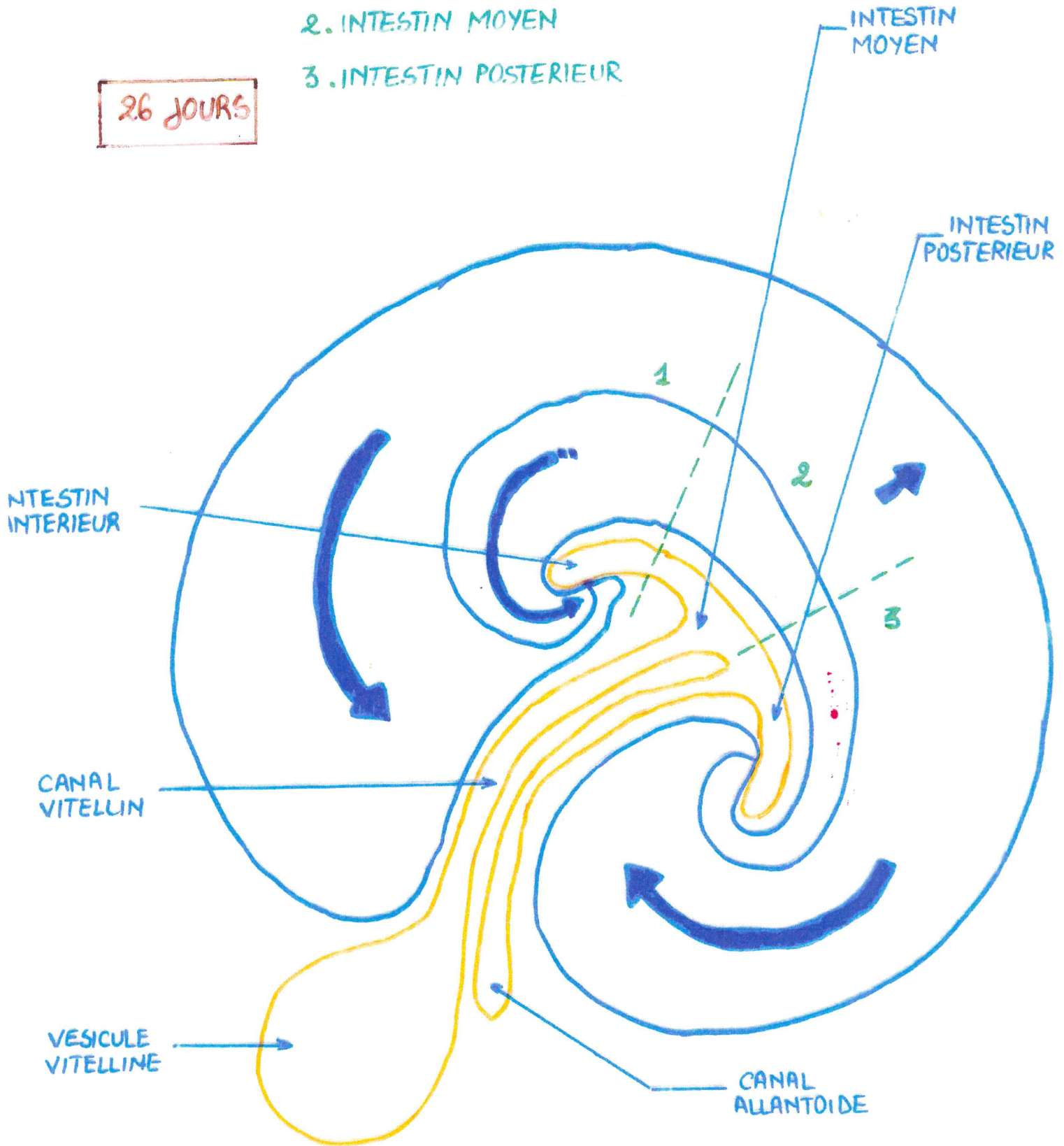
1. ATRESIE DE L'OESOPHAGE:
2. FISTULE OESO - TRACHEALE: PASSAGE DES FLUIDES DANS LES POUMONS (+ HYDRAMNIOS)
3. STENOSE ↓ DE Ø DE LA TRACHEE

F) HYPOPLASIE PULMONAIRE

TRES FREQUENTE, SUITE A UNE HERNIE DIAPHRAGMATIQUE : ↓ DIMINUTION DU VOLUME PULMONAIRE II^{ème} A LA SAILLIE DES VISCERES ABDOMINAUX DANS LE THORAX.

1. INTESTIN ANTERIEUR
2. INTESTIN MOYEN
3. INTESTIN POSTERIEUR

26 JOURS



DEVENIR DE L'ENTOBLASTE

TUBE DIGESTIF PRIMITIF (ANTERIEUR/MOYEN/POSTERIEUR)